

A close-up photograph of a dense field of green grapevines. The leaves are vibrant green and have a slightly textured appearance. In the center of the image, the text "Final DSAP Question" is overlaid in a large, white, sans-serif font. The text is arranged in three lines: "Final" on the top line, "DSAP" on the middle line, and "Question" on the bottom line. The background is a soft-focus field of grapevines, with the leaves and clusters of grapes visible. The overall color palette is dominated by various shades of green, from bright lime to deep forest green.

Final
DSAP
Question

If you were continuing to work on this gene, what would you do next?

7 As a scientist investigating this protein in duckweed, what experiments would you do next?

« Back

Save Now

Next »



Follow-up questions about the protein

When is the gene/protein expressed?

Where is the protein located in the cell or organism?

What other proteins interact with the protein?

What would happen if we removed the protein?

Can we determine its enzymatic activity?

What is the structure of the protein?

When/Where is your gene expressed?

Is it on all the time, in all cells?

If so, what does that tell you?

Or, Is it only expressed at certain times?

At specific points during the cell cycle? (G1, S, G2, M)

At specific points during the life cycle? (seeds vs plants)

Or, Is it only expressed under specific conditions?

Light vs dark?

Under stress (low pH, heavy metals, high T°)

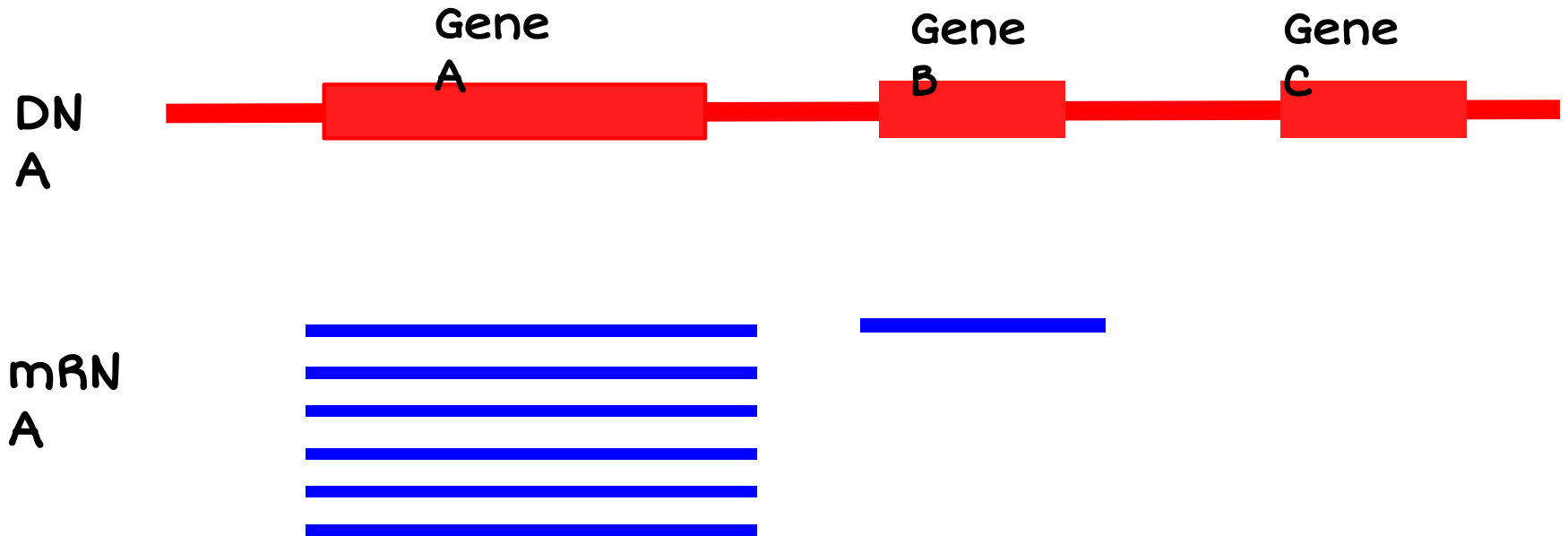
Or, Is it only expressed in certain places?

Nucleus, golgi, membrane surface, cell wall?

Roots, leaves, flowers?

Assaying Gene Expression

Which genes are transcribed and at what level?

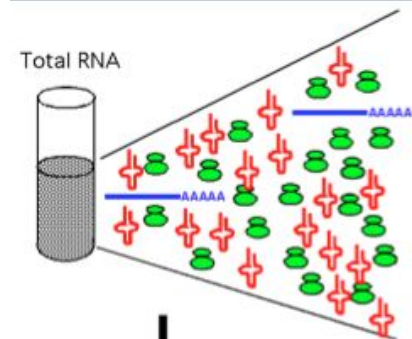
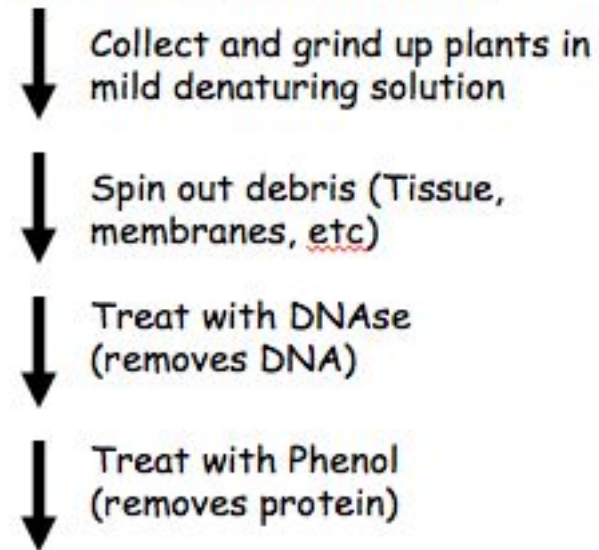


How can we assay the expression of a specific mRNA?

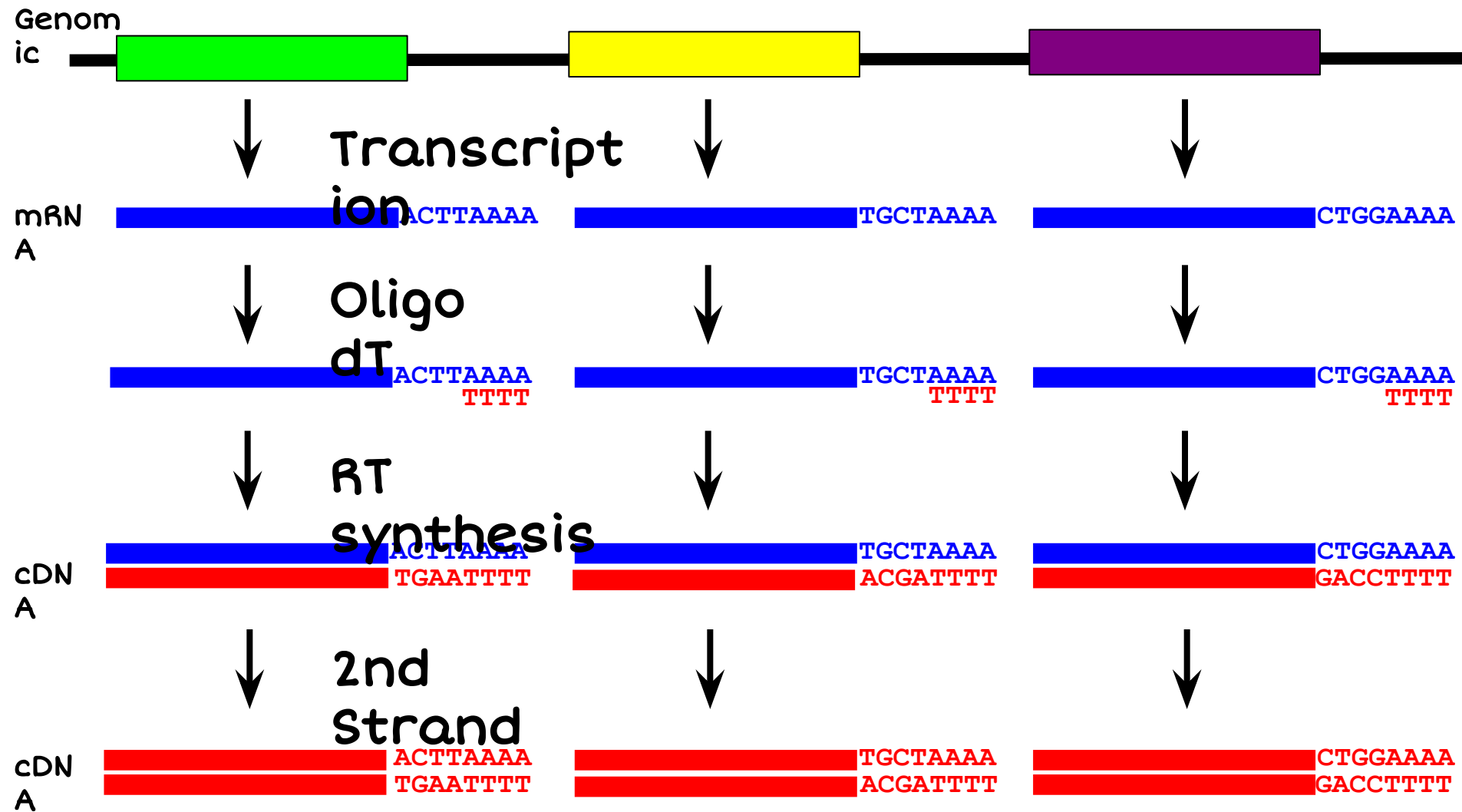
RNA purification
cDNA synthesis
PCR
agarose gels

cDNA Synthesis
vs
Reverse Transcriptase-PCR
(RT-PCR)

Purify mRNAs

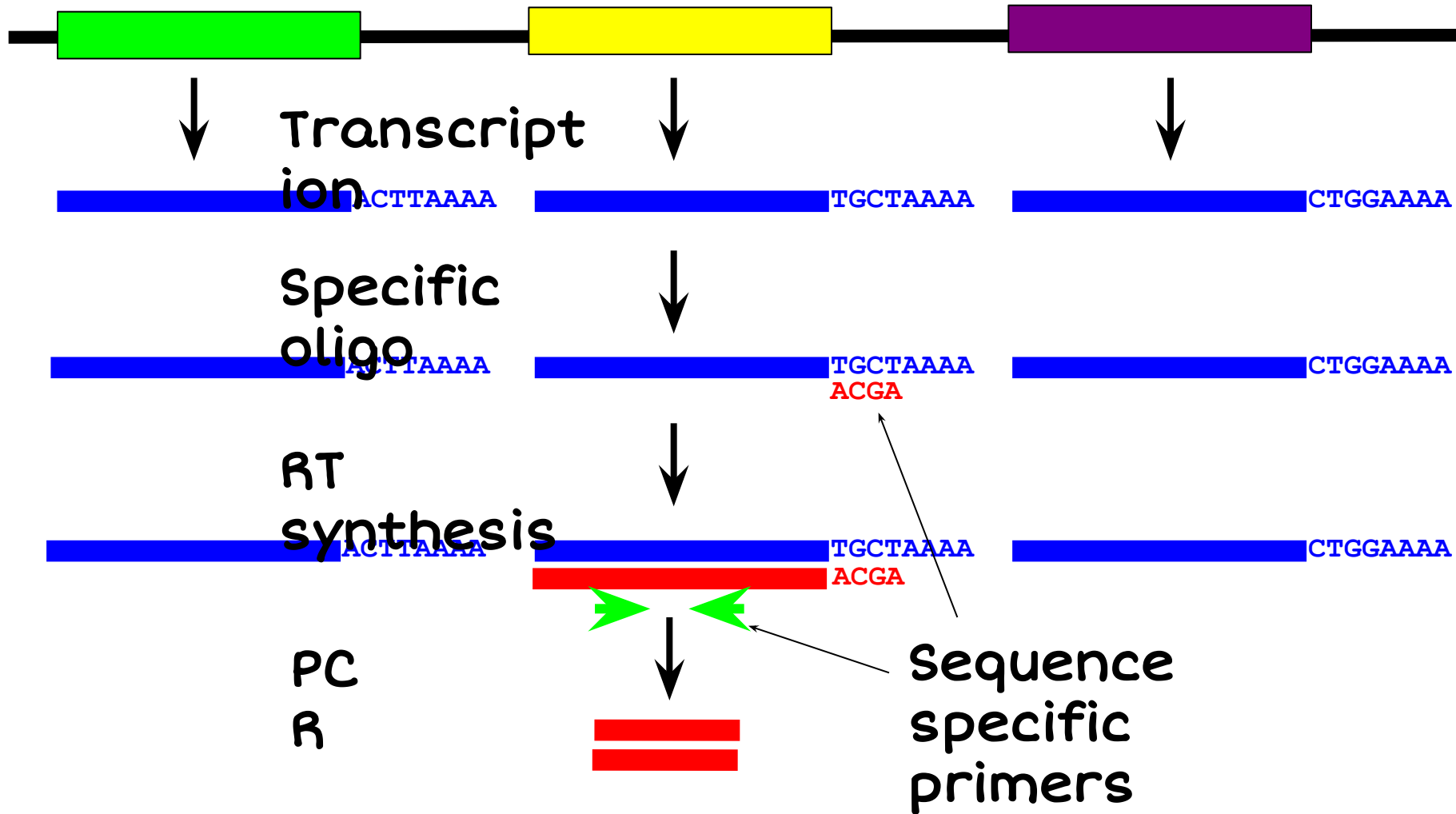


cDNA Synthesis with oligo-dT



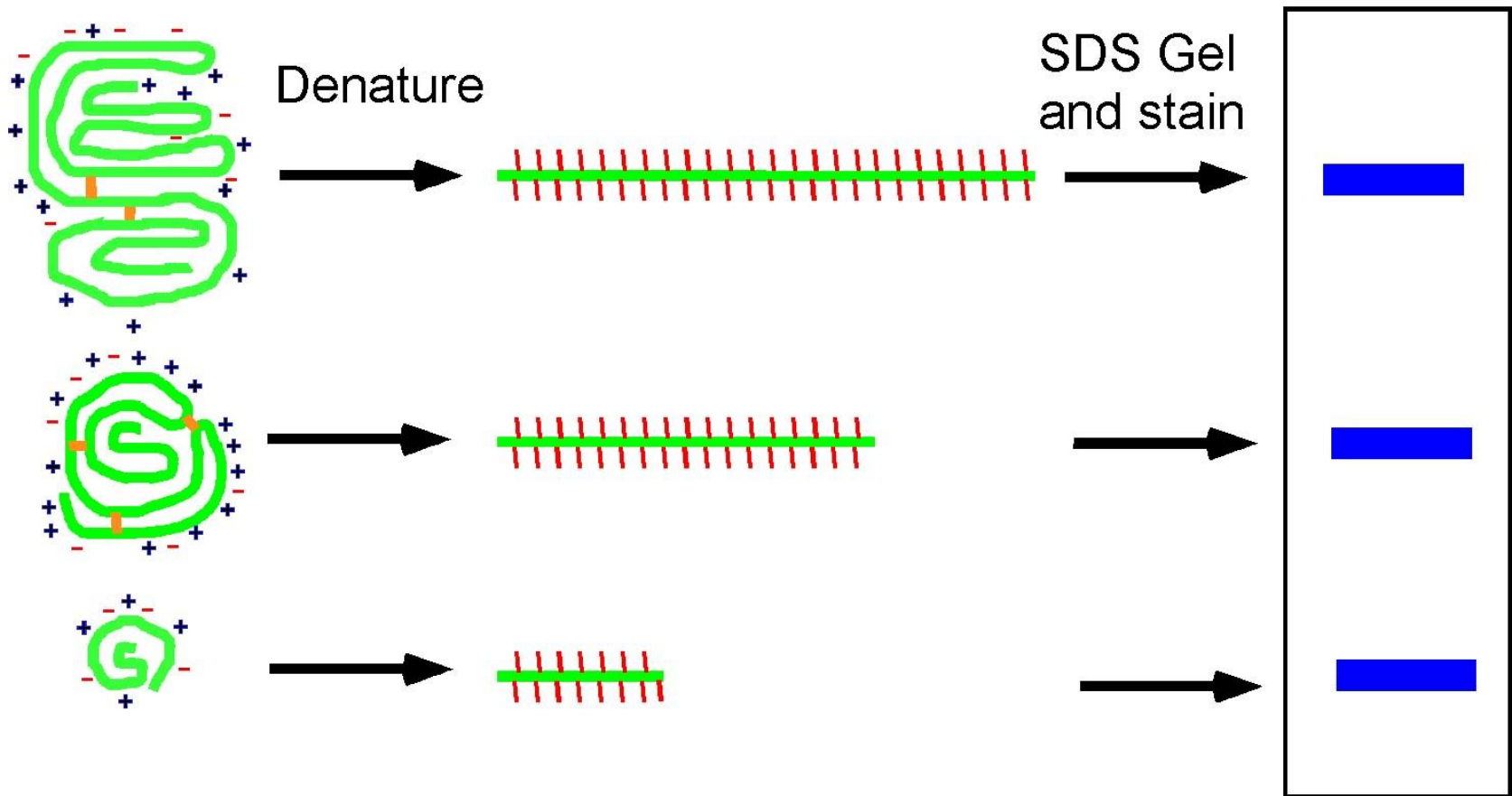
Amplifies every mRNA in the cell

RT-PCR with specific cDNA oligos

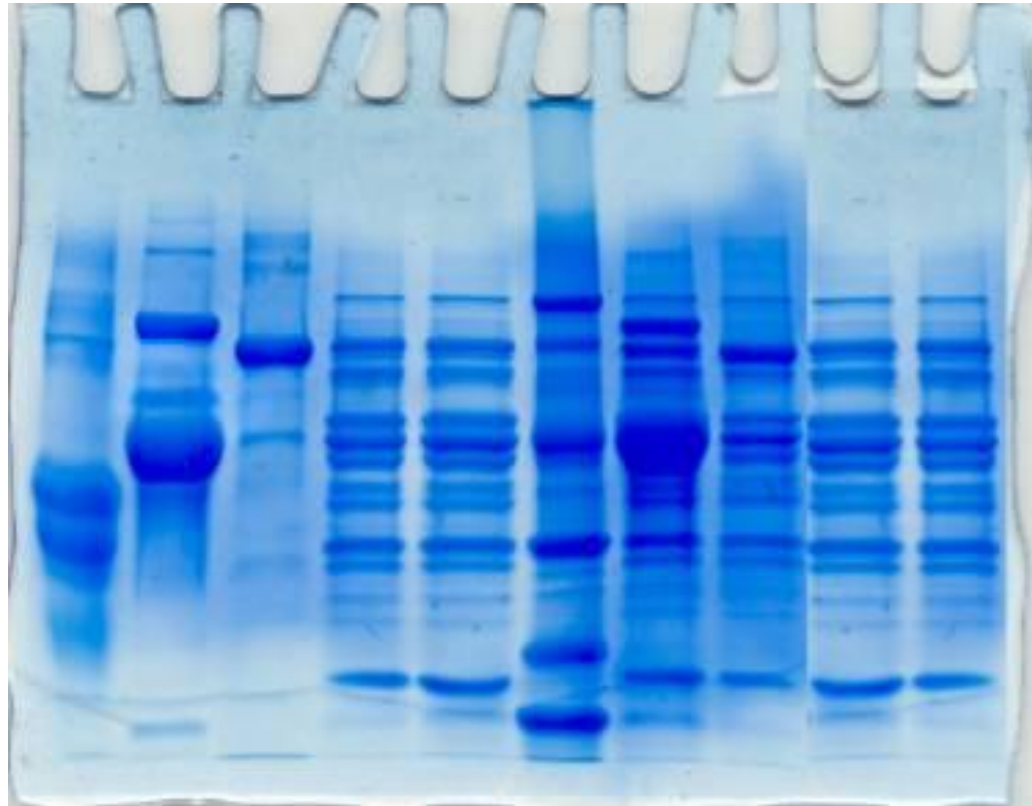


Amplifies only a specific mRNA in the cell

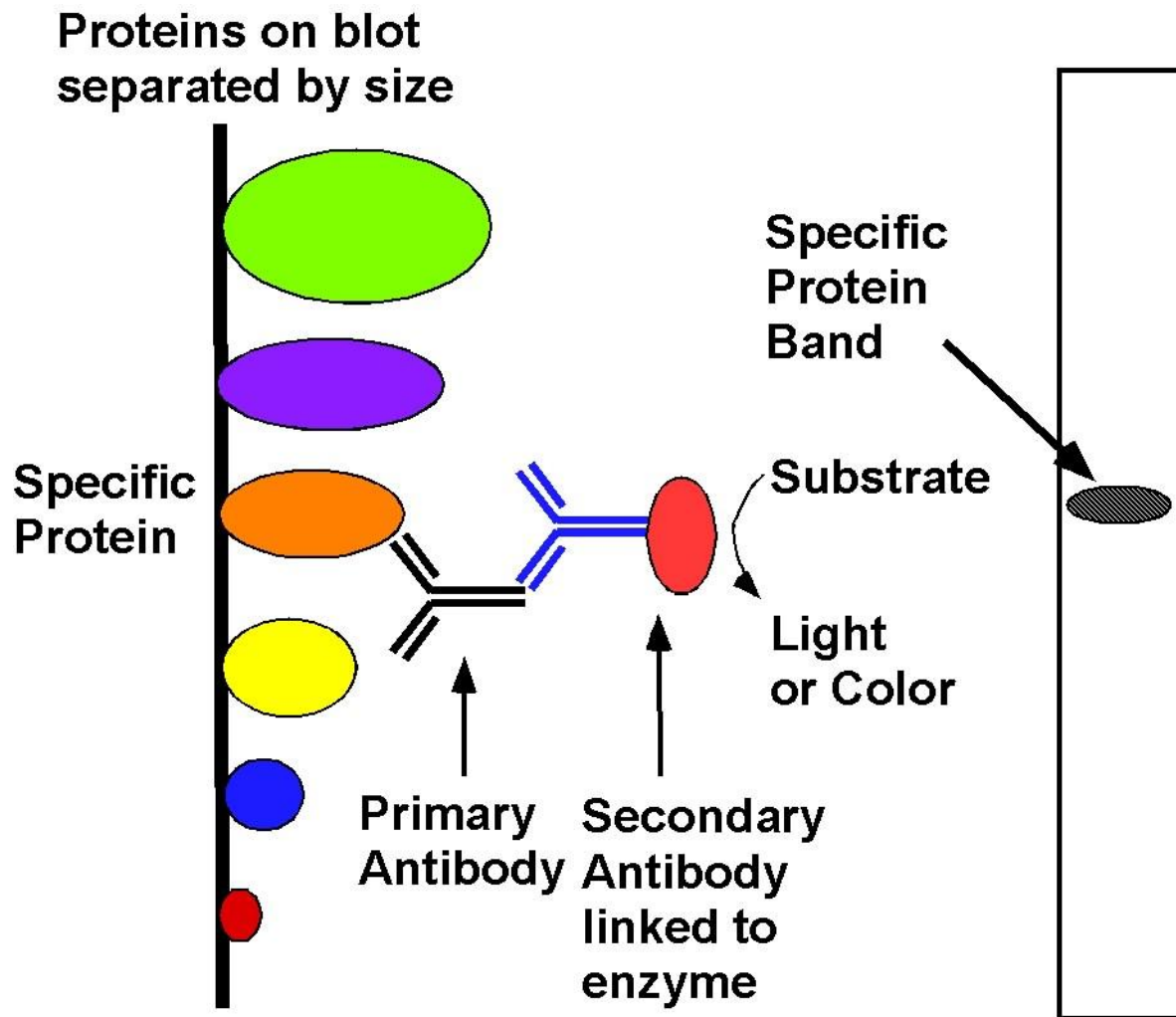
Proteins of different shape and charge run according to size on a denaturing gel



Coomassie stained protein gel

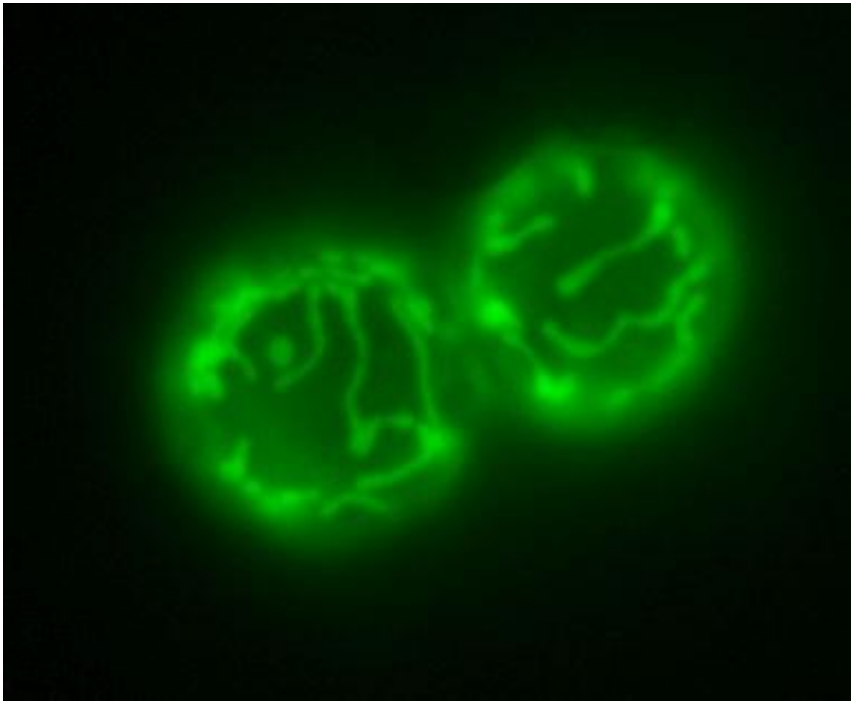


Western blot reaction

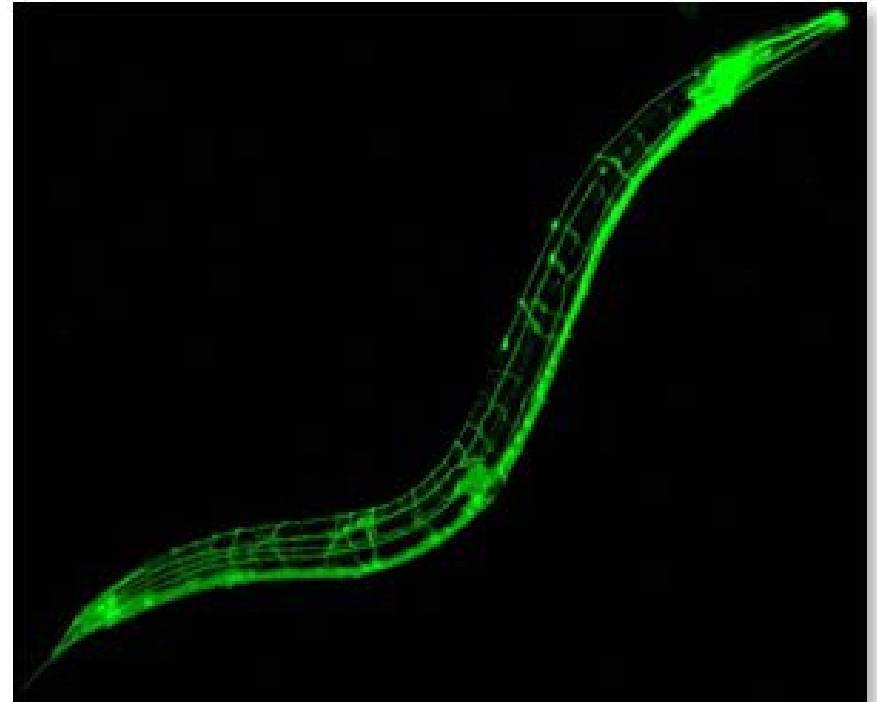


Where is the protein localized in the cell or organism?

Green Fluorescent Protein (GFP) tagged proteins
- Used to localize proteins in the cell

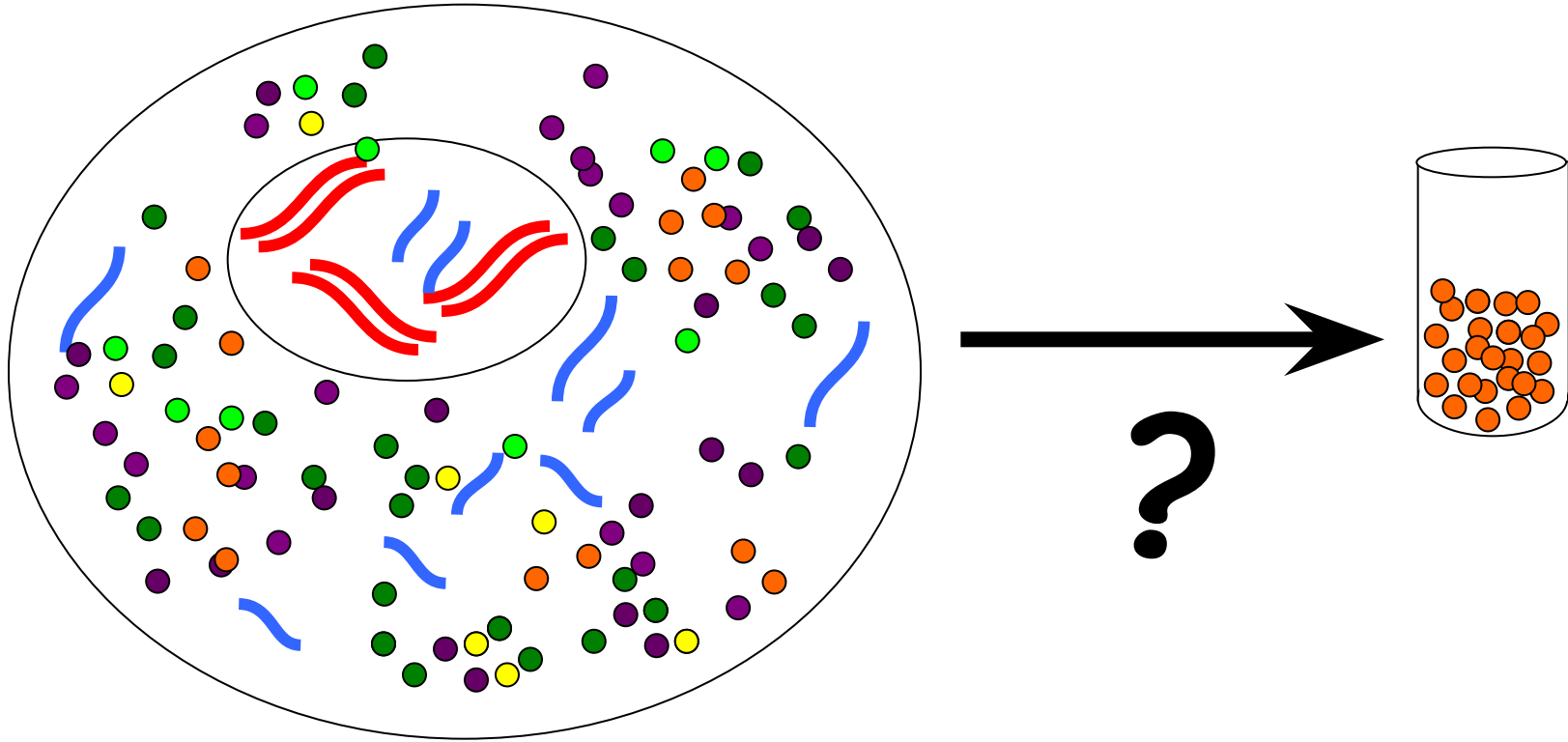


Yeast Mitochondria

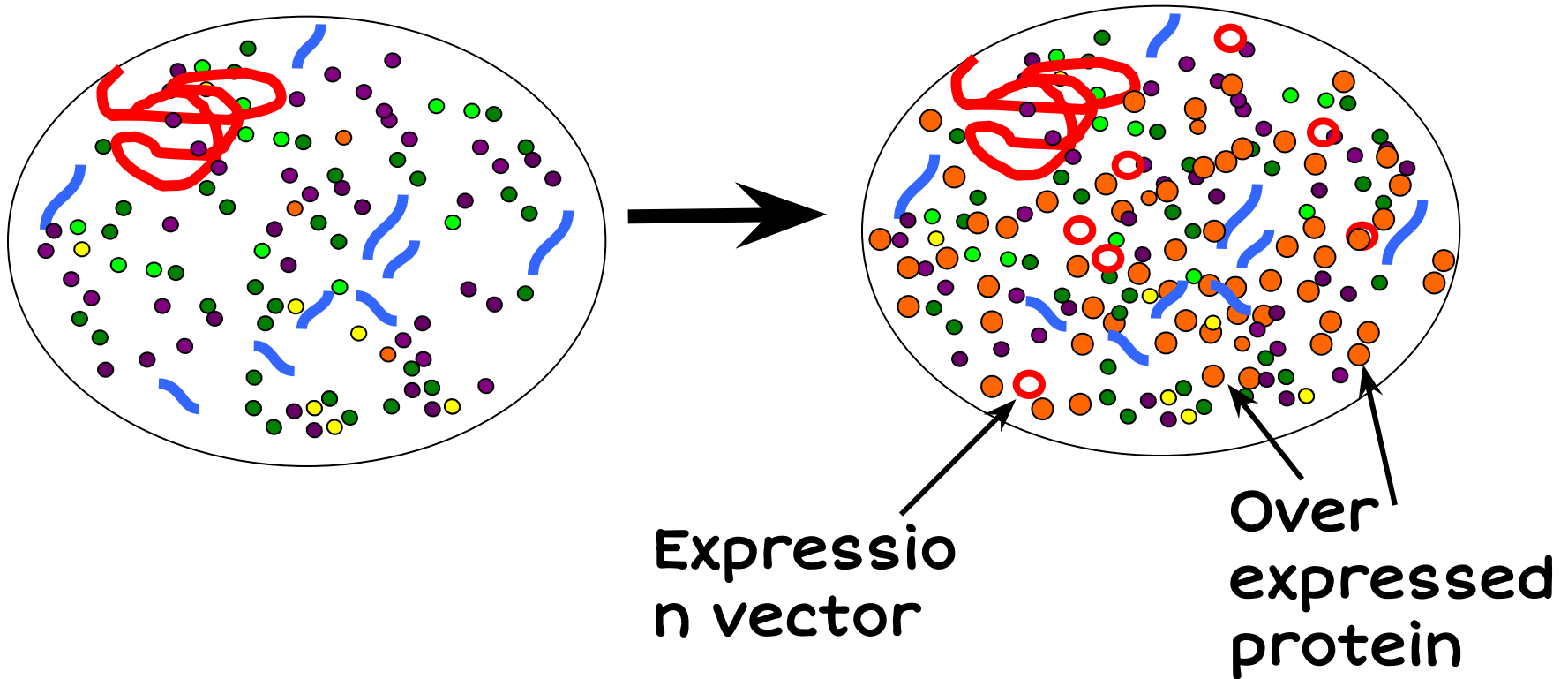


Worm nervous system

How can we obtain enough of a protein to make antibodies, crystals or enzymatic assays?



Overexpression of a protein in a bacteria



Determination of the a protein structure by crystallography

